







Legends

- | | |
|--------------------|-------------------------|
| 1. Entrance | 11. Swimming Pool |
| 2. Sit-out Courts | 12. Sculpture Point |
| 3. Sculpture Court | 13. Club Building |
| 4. Lawn | 14. Skating Rink |
| 5. Fitness Court | 15. Multi-purpose Court |
| 6. Yoga Court | 16. Jogging Track |
| 7. Amphitheatre | 17. Multi-purpose Lawn |
| 8. Kid's Play Area | 18. Drop-off Area |
| 9. Pool Deck | 19. Parking |
| 10. Kid's Pool | 20. Electrical Services |

Khyber Range



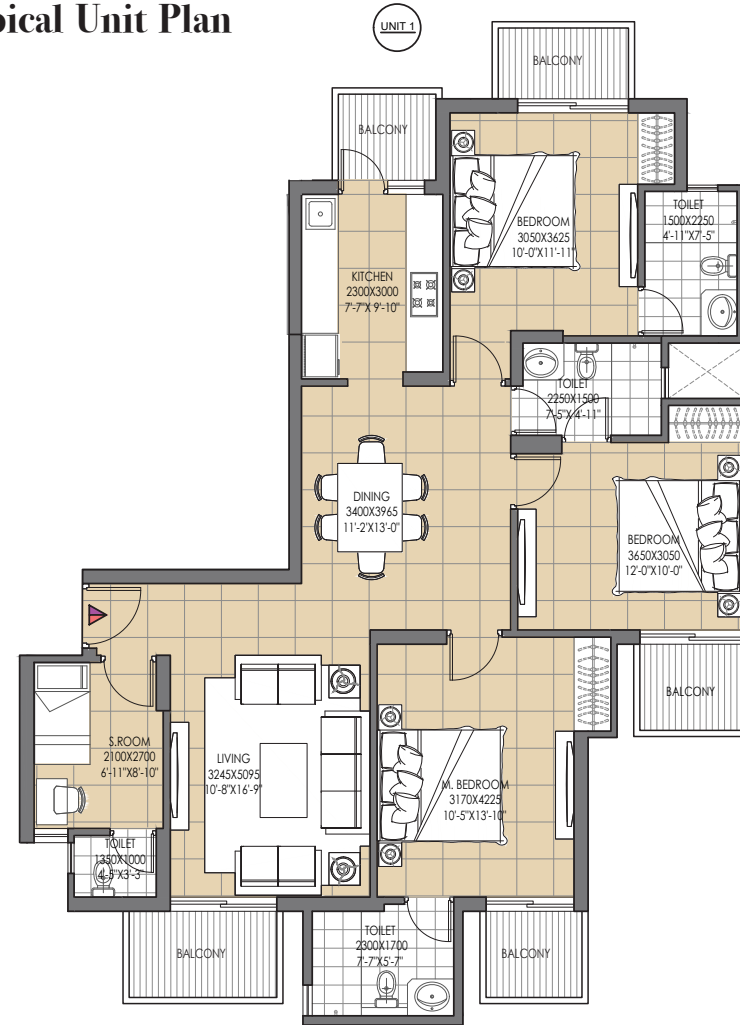
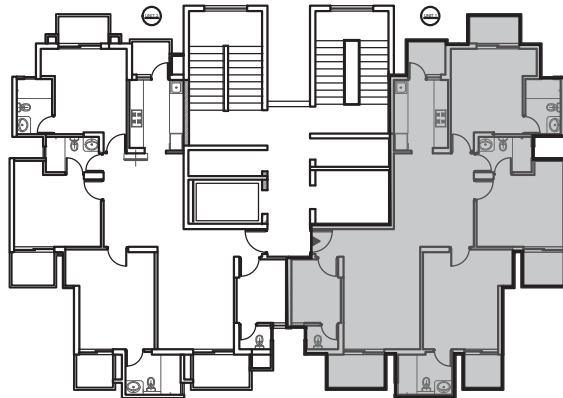
Isometric View



Entry

Typical Unit Plan

KEY PLAN



Saleable Area: 159.79 Sq.M.
123.75 Sq. M. (Built-up Area) + 36.04 Sq. M. (Common Circulation + Services)
Carpet Area: 97.30 Sq. M.

Saleable Area: 1720 Sq.Ft.
1332 Sq. Ft. (Built-up Area) + 388.00 Sq. Ft. (Common Circulation + Services)
Carpet Area: 1047 Sq. Ft.

Note :
sqft

1sqm = 10.764

1. The Window size/its location may change because of elevation features.
2. Overall layout may vary because of statutory reasons in case required.
3. Column location & sizes may vary as/structure.
4. Layout shown is for illustration purpose. For specific unit floor plan please contact sales.
5. Saleable area is tentative and is subject to change due to modifications asked for by approving authorities from time to time till occupancy certificate is obtained. Architect reserves the right to add/delete any details/specifications/elevations mentioned.